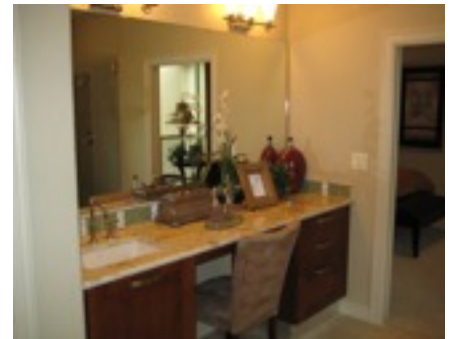
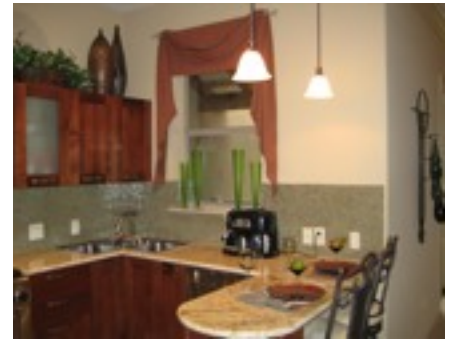


SUMMERFIELD TOWNHOMES AT THE PARK

\$5000 selling agent bonus if closed by December 15 2011



GREAT COMMUNITY - GREAT LOCATION

THE SUMMERFIELD TOWNHOMES ARE MOVING FORWARD, FAST AND FURIOUS! NOW IS THE TIME TO TAKE ADVANTAGE OF A GREAT OPPORTUNITY IN THIS WONDERFUL GATED COMMUNITY CENTRALLY LOCATED AT N. W. MILITARY AND WURZBACH PKWY. SHOPPING IS WALKING DISTANCE AT THE ALON TOWN CENTER AND THE JCC AND VOELKER PARK ARE ACROSS THE STREET. WE HAVE TWO FINISHED HOMES AVAILABLE AT A \$60,000 DISCOUNT OFF (APPRAISED VALUE*)!!!! THESE ARE 3 - 2 1/2 - 2 WITH TONS OF UPGRADES! THE POOL IS 50% FINISHED AND THE CABANA CONSTRUCTION IS ABOUT TO START. COMPLETION WINTER 2011.

We will be starting new homes priced from the low \$200's this winter

OFFERED AT \$250,000

PLEASE CONTACT FRANK PRINCE FOR SHOWING 210-213-4776

*BASED ON MODEL HOME APPRAISAL.

Property characteristics

- GATED COMMUNITY
- COMMUNITY POOL
- COMMUNITY CABANA
- WALKING TO SHOPPING
- ACROSS FROM VOELKER PARK
- GRANITE TOPS
- UPGRADED FLOORING
- APPLIANCE PACKAGE INCLUDED
- PRIVATE REAR PATIO YARD AREA
- 1 YEAR JCC MEMBERSHIP

MODEL HOME 13522 ABLE CREEK SAN ANTONIO TEXAS 78231